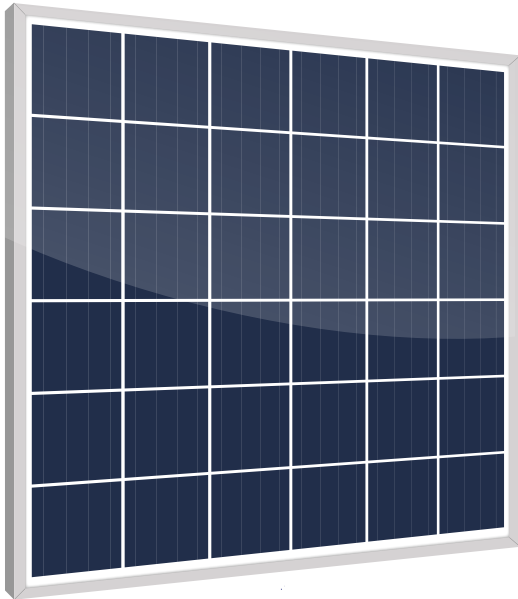
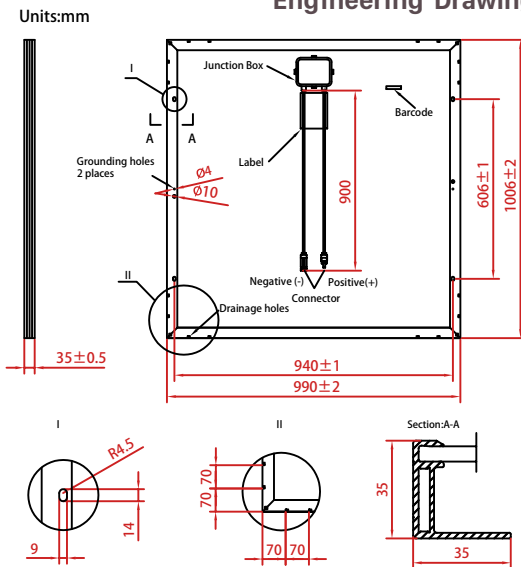


CST156*156-P-36-155W



Engineering Drawings



Mechanical Specifications

| | |
|-----------------------|--|
| External Dimensions | 1006*990*40/35mm |
| Weight | 11.5kg |
| Solar Cells | poly crystalline 156.75*156.75mm (36pcs) |
| Front Glass | 3.2 mm tempered glass low iron |
| Frame | Anodized aluminum alloy |
| Junction Box | IP67 |
| Output Cables | 4.0mm ² , cable lenght:900mm |
| Connector | Ningbo Guangzhixing Photovoltaic Technology PV-GZX1500 |
| Mechanical Load/front | a:5400pa b:3600pa |
| Mechanical Load/back | a:2400pa b:1600pa |

36 Cells Polycrystalline PV Module



20 years Performance Guarantee
10-YEAR90%Maximum Output
20-YEAR80%Maximum Output



10 years Product Warranties
overlength quality warranties
age limit



Positive tolerance
Positive tolerance of up to 5 W delivers higher output reliability



Excellent weak light performance
More power output in weak light condition, such as haze,cloudy and morning



Certified to withstand
wind load (2400 Pascal) and snow load (5400 Pascal).



Manufactured in china

| Electrical Characteristics | CST156*156-P-36-155W |
|---|----------------------|
| Maximum Power - Pmax(W) | 155 (0/+5W) |
| Open Circuit Voltage - Voc(V) | 22.70 ± 5% |
| Short Circuit Current - Isc(A) | 8.92 ± 5% |
| Voltage at Pmax-Vmp(V) | 18.50 |
| Current at Pmax-Imp(A) | 8.38 |
| Module Efficiency-ηm(%) | 15.60 |
| Safety factor | 1.5 |
| Maximum System Voltage(V) | 1500 |
| Maximum Series Fuse Rating(A) | 15 |
| STC: Irradiance 1000 W/m ² , module temperature 25 °C, AM=1.5; Best in Class AAA solar simulator (IEC 60904-9) used, power measurement uncertainty is within +/- 3% NOCT: Irradiance 800 W/m ² , ambient temperature 20 °C, AM=1.5, wind speed 1 m/s; Best in Class AAA solar simulator (IEC 60904-9) used, power measurement uncertainty is within +/- 3% | |

Packing Configuration

| | | |
|-----------------------|-------|-------|
| Container | 20'GP | 40'GP |
| Pieces per pallet | 30 | 30 |
| Pallets per container | 14 | 45 |
| Pieces per container | 420 | 1350 |

Temperature Characteristics

| | |
|---|------------|
| Pmax Temperature Coefficient | -0.40 %/°C |
| Voc Temperature Coefficient | -0.32 %/°C |
| Isc Temperature Coefficient | +0.05 %/°C |
| Operating Temperature | -40~85 °C |
| Nominal Operating Cell Temperature (NOCT) | 45±2 °C |