

CST156*156-M-36-160W



36 Cells Monocrystalline PV Module



20 years Performance Guarantee
10-YEAR90%Maximum Output
20-YEAR80%Maximum Output



10 years Product Warranties
overlength quality warranties
age limit



Positive tolerance
Positive tolerance of up to 5 W delivers higher output reliability



Excellent weak light performance
More power output in weak light condition, such as haze,cloudy
and morning

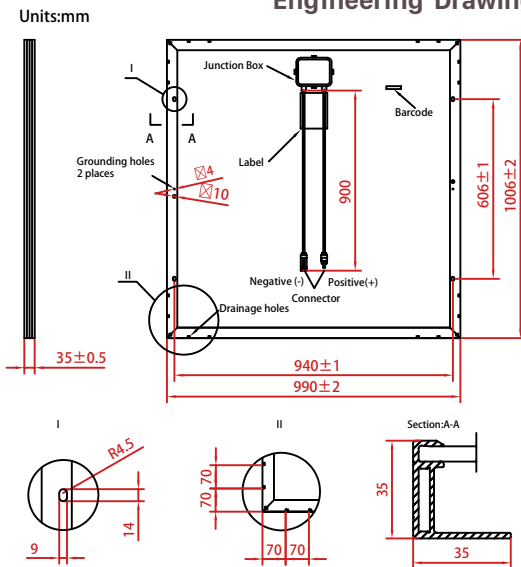


Certified to withstand
wind load (2400 Pascal) and snow load (5400 Pascal).



Manufactured in china

Engineering Drawings



Mechanical Specifications

External Dimensions	1006*990*40/35mm
Weight	11.5kg
Solar Cells	mono crystalline 156.75*156.75mm (36pcs)
Front Glass	3.2 mm tempered glass low iron
Frame	Anodized aluminum alloy
Junction Box	IP67
Output Cables	4.0mm ² , cable lenght:900mm
Connector	Ningbo Guangzhixing Photovoltaic Technology PV-GZX1500
Mechanical Load/front	a:5400pa b:3600pa
Mechanical Load/back	a:2400pa b:1600pa

Electrical Characteristics	CST156*156-M-36-160W
Maximum Power - Pmax(W)	160 (0/+5W)
Open Circuit Voltage - Voc(V)	22.48 ± 5%
Short Circuit Current - Isc(A)	9.17 ± 5%
Voltage at Pmax-Vmp(V)	18.31
Current at Pmax-Imp(A)	8.74
Module Efficiency-ηm(%)	16.10
Safety factor	1.5
Maximum System Voltage(V)	1500
Maximum Series Fuse Rating(A)	15
STC: Irradiance 1000 W/m ² , module temperature 25 °C, AM=1.5; Best in Class AAA solar simulator (IEC 60904-9) used, power measurement uncertainty is within +/- 3% NOCT: Irradiance 800 W/m ² , ambient temperature 20 °C, AM=1.5, wind speed 1 m/s; Best in Class AAA solar simulator (IEC 60904-9) used, power measurement uncertainty is within +/- 3%	

Packing Configuration

Container	20'GP	40'GP
Pieces per pallet	30	30
Pallets per container	14	45
Pieces per container	420	1350

Temperature Characteristics

Pmax Temperature Coefficient	-0.40 %/°C
Voc Temperature Coefficient	-0.32 %/°C
Isc Temperature Coefficient	+0.05 %/°C
Operating Temperature	-40~85 °C
Nominal Operating Cell Temperature (NOCT)	45±2 °C