



SPP325-370P72

370W MWT Module Poly 72 Cells

Features



Higher Efficiency

The highest efficiency of the series is up to 19.1%.



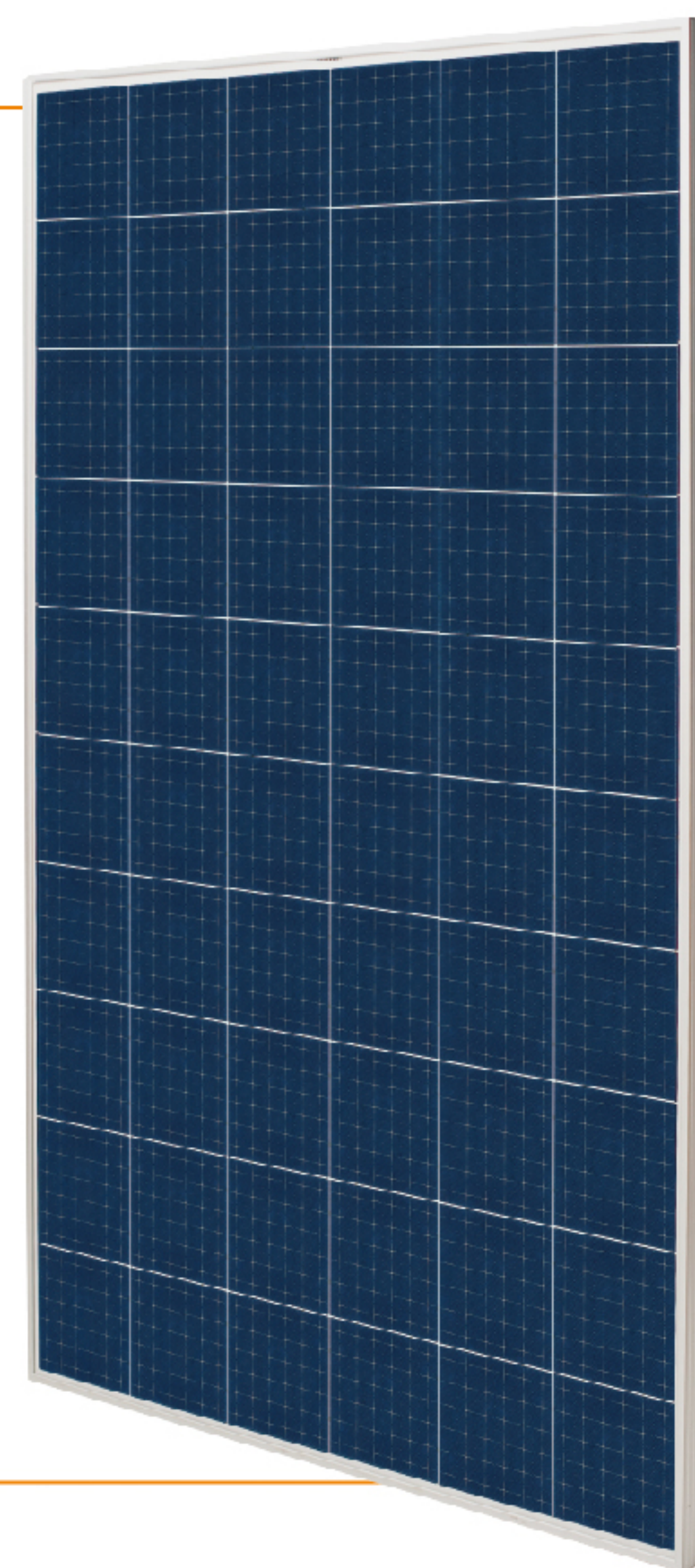
Higher Yield

Higher power generation on the same installation.

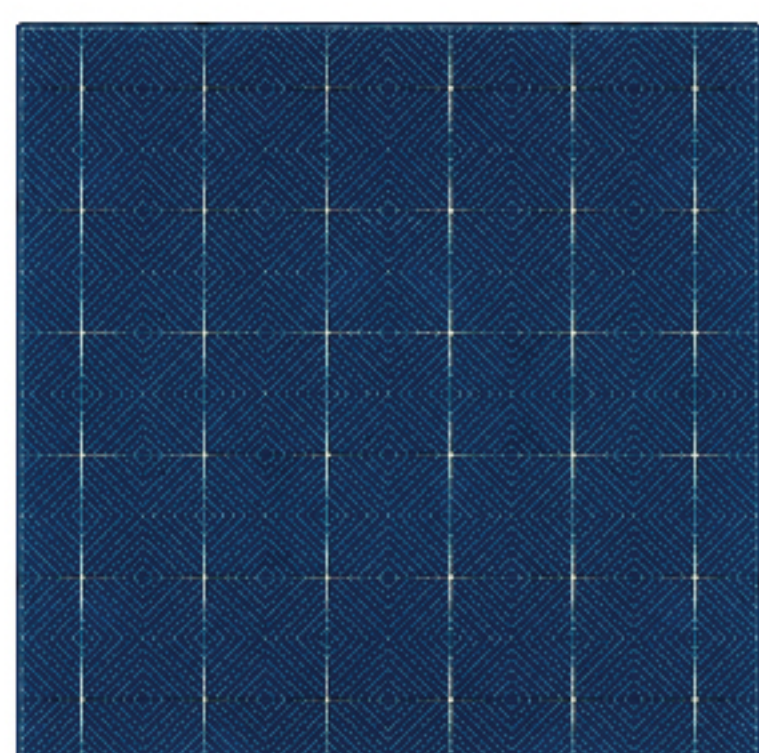


Lower Degradation

At least 98% of the initial effective output at the 1st year and 80.2% at the 30th year.



MWT Back Contact Solar Cell



- New cell structure and different manufacturing process.
- No bus-bar on the front. 3% less shadow and better use of sunlight.
- Effectively avoid the micro crack caused by the pressure between cell edge and ribbon.
- Compatible with other cell types including PERC, HIT, Black Silicon etc.

Comprehensive Qualifications & Certifications

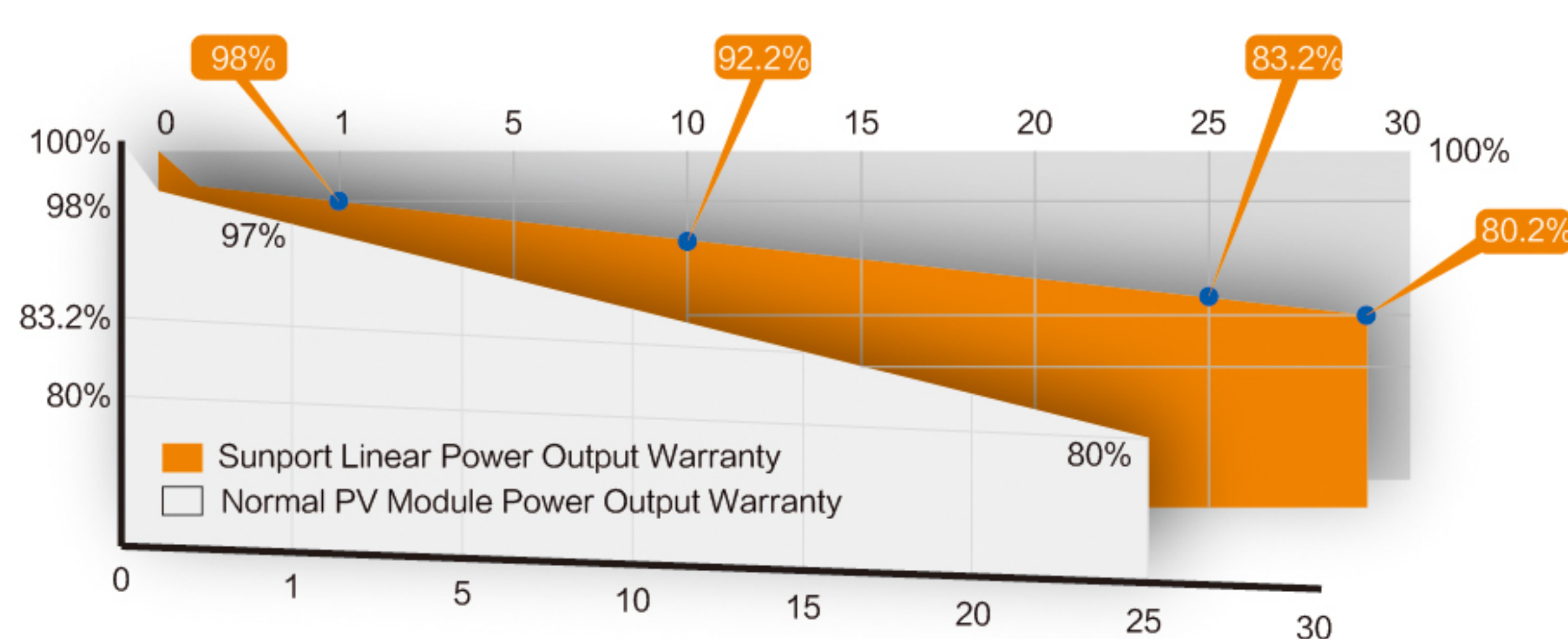
- ★ IEC 61215, IEC 61730, IEC 61701, IEC 62716, IEC 60068-2-68.
- ★ CQC&CGC Top Runner Advanced Technology Certification (4A class)
- ★ ISO 9001: 2015 Quality Management System
- ★ ISO 14001: 2015 Environment Management System
- ★ OHSAS 18001: 2007 Occupation Health Safety Management System
- ★ TUV NORD and UK NQA Quality System Certification



Insured by PICC and LLOYD'S

PICC
LLOYD'S

30 Years Performance Warranty



Jiangsu Sunport Power Corp., Ltd.

Manufactured in China



No.20, Xishi Road, Xinwu District, Wuxi



+86-25-52752690



www.sunportpower.com

SPP325–370P72



Electrical Characteristics at Standard Test Conditions(STC)

Spec/Model	Unit	SPP325P72	SPP330P72	SPP335P72	SPP340P72	SPP345P72	SPP350P72	SPP355P72	SPP360P72	SPP365P72	SPP370P72
Max–Power (Pm)	W	325	330	335	340	345	350	355	360	365	370
Power Tolerance	W	0~+3%									
Max–Power Voltage (Vm)	V	36.5	36.7	36.9	37.1	37.3	37.5	37.7	37.9	38.1	38.3
Max–Power Current (Im)	A	8.91	9.00	9.08	9.17	9.25	9.34	9.42	9.50	9.59	9.67
Open–Circuit Voltage (Voc)	V	45.4	45.6	45.8	46.0	46.2	46.4	46.6	46.8	47.0	47.2
Short–Circuit Current (Isc)	A	9.51	9.58	9.65	9.72	9.79	9.86	9.92	9.98	10.04	10.10
Module Efficiency (ηm)	%	16.7	17.0	17.3	17.5	17.8	18.1	18.3	18.6	18.8	19.1

STC:AM=1.5, Irradiation1000W/m², Module Temperature25℃

Electrical Characteristics at Nominal Module Operating Temperature (NMOT)

Spec/Model	Unit	SPP325P72	SPP330P72	SPP335P72	SPP340P72	SPP345P72	SPP350P72	SPP355P72	SPP360P72	SPP365P72	SPP370P72
Max–Power (Pm)	W	241	245	249	253	257	260	264	268	272	276
Max–Power Voltage (Vm)	V	33.3	33.5	33.7	33.9	34.1	34.2	34.4	34.6	34.8	35.0
Max–Power Current (Im)	A	7.24	7.32	7.40	7.47	7.54	7.61	7.68	7.75	7.82	7.89
Open–Circuit Voltage (Voc)	V	41.8	42.0	42.2	42.4	42.5	42.6	42.7	42.8	42.9	43.0
Short–Circuit Current (Isc)	A	7.67	7.72	7.80	7.88	7.95	8.02	8.09	8.15	8.20	8.25

NMOT: Irradiation800W/m², Ambient Temperature20℃,Wind Speed1m/s

Temperature Coefficient

Nominal Module Operating Temperature	43±2℃
Temperature Coefficient of Pm	-0.36%/℃
Temperature Coefficient of Voc	-0.28%/℃
Temperature Coefficient of Isc	0.06%/℃

Operating Conditions

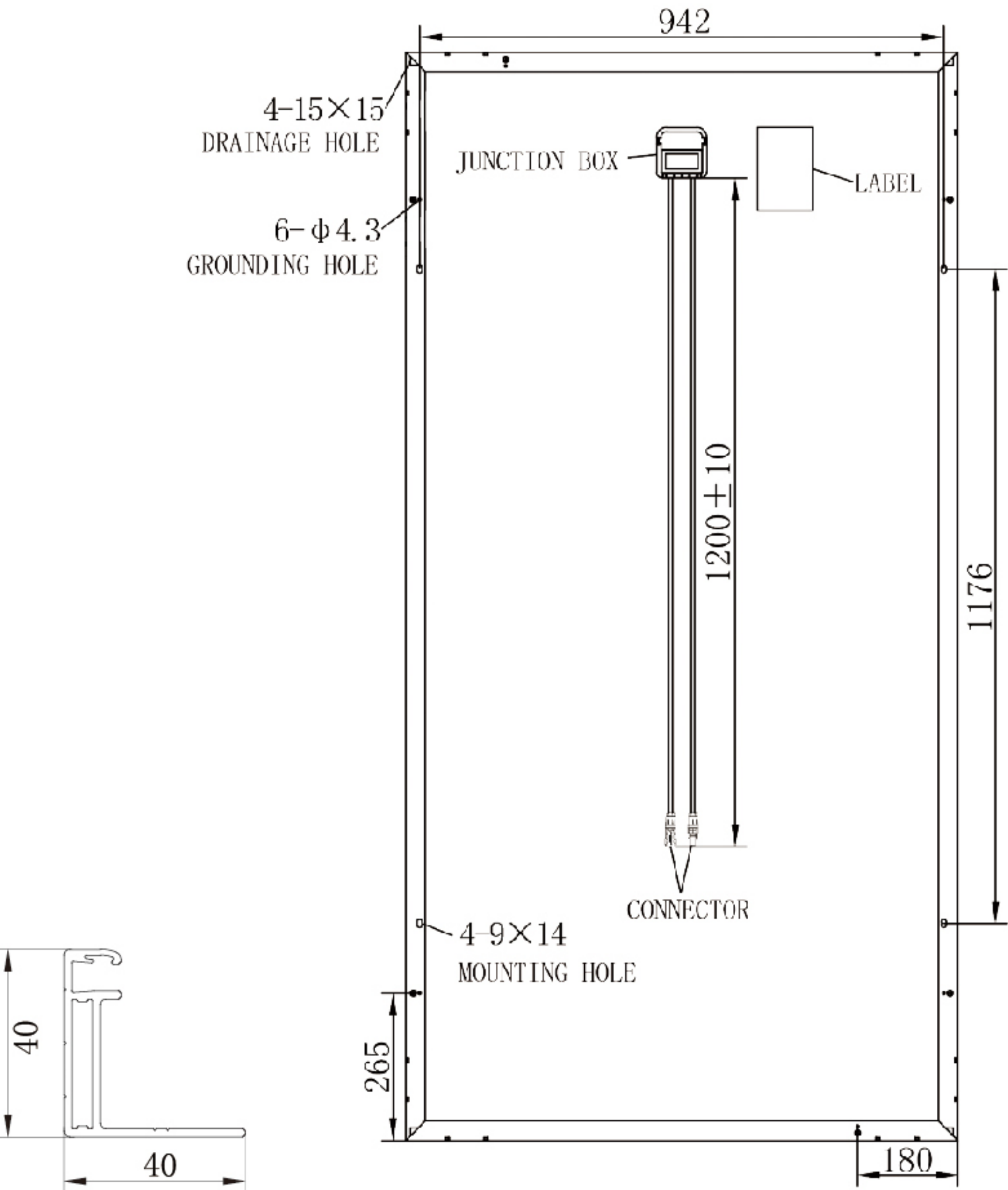
Max System Voltage	DC1000V(TUV)
Max Fuse Rated Current	15A
Operating Temperature Range	-40℃ ~ +85℃
Mechanical Load	5400Pa/2400Pa
Max Allowable Hail Load	φ 25mm hail, from 1m of distance at 23 m/s
Application Class	Class A

Mechanical Property

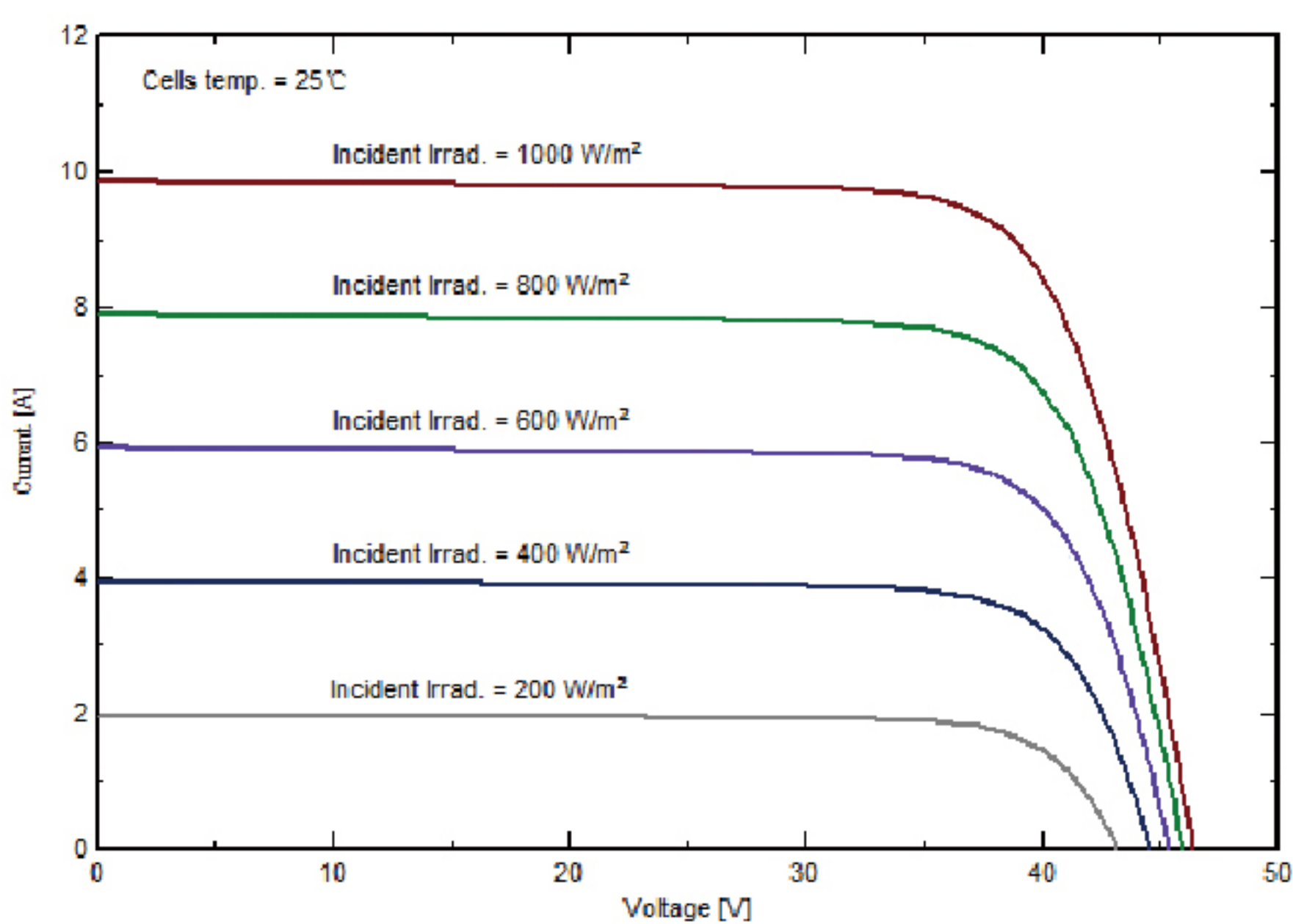
Dimension(L×W×H)	1956mmx992mmx40mm
Weight	22.5kg
Front Glass	High Transmittance Anti-reflective Coated Tempered Glass /3.2mm
solar cell	72(12x6)/6 inches
Encapsulant	EVA
Frame	Anodized Aluminum Alloy / Ailver /Clear
Junction Box	IP67
Cable	1200mm / 4mm²
Connector	TL-CABLE01

Package

Container Size	Quantity(pcs)	Quantity(pallet)
20’ GP	260	10
40’ GP	624	24
40’ HC	624	24



I–V Curve at Different Irradiation (SPP350P72)



I–V Curve at Different Temperature (SPP350P72)

