



SPP270-315P60

315W MWT Module Poly 60 Cells

Features



Higher Efficiency

The highest efficiency of the series is up to 19.4%.



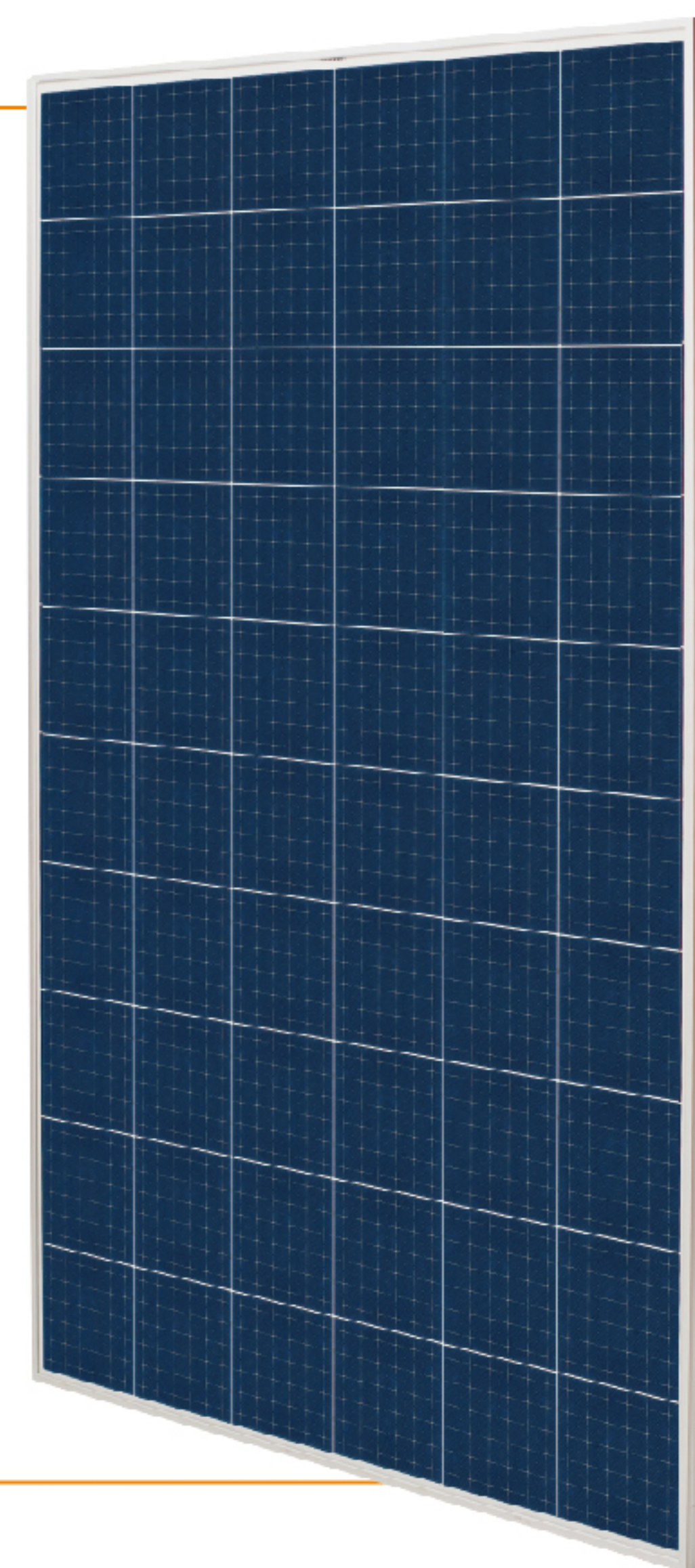
Higher Yield

Higher power generation on the same installation.

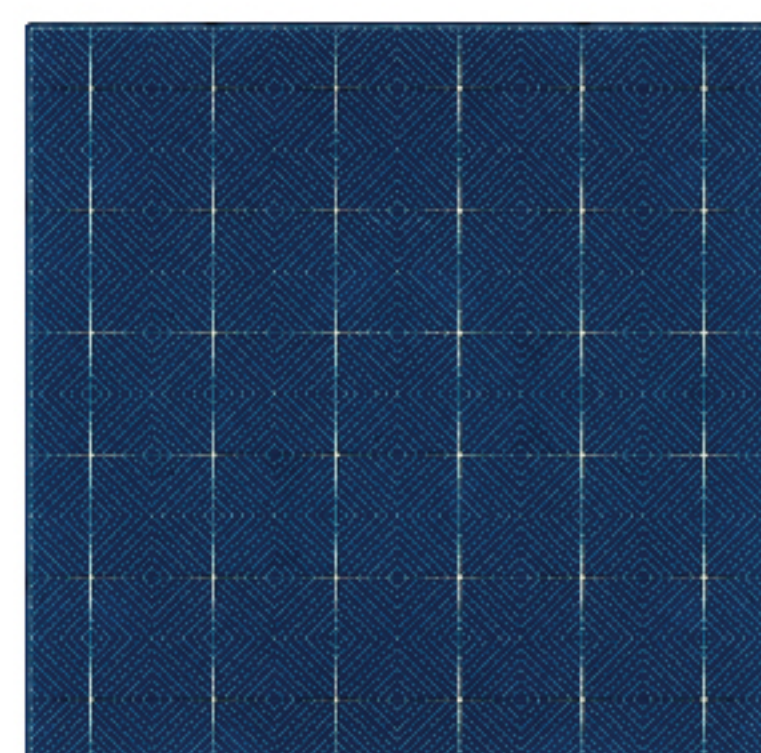


Lower Degradation

At least 98% of the initial effective output at the 1st year and 80.2% at the 30th year.



MWT Back Contact Solar Cell



- New cell structure and different manufacturing process.
- No bus-bar on the front. 3% less shadow and better use of sunlight.
- Effectively avoid the micro crack caused by the pressure between cell edge and ribbon.
- Compatible with other cell types including PERC, HIT, Black Silicon etc.

Comprehensive Qualifications & Certifications

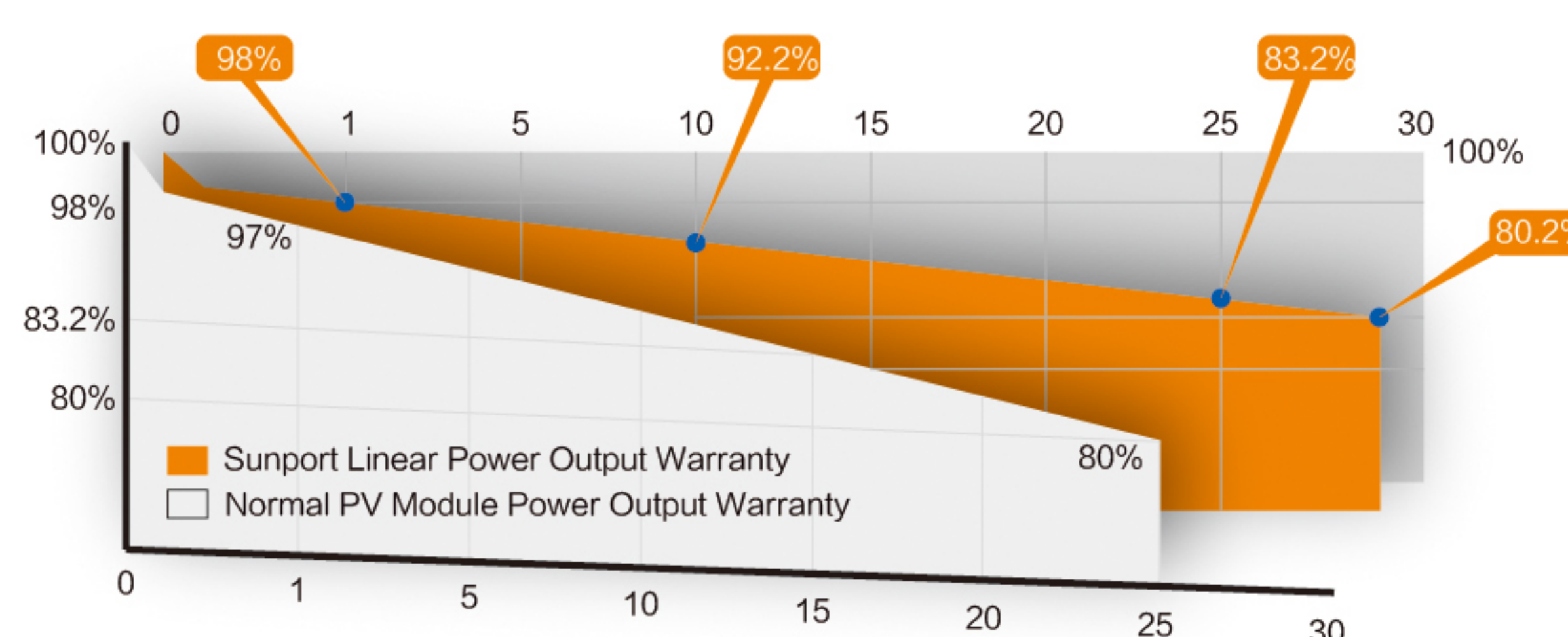
- ★ IEC 61215, IEC 61730, IEC 61701, IEC 62716, IEC 60068-2-68.
- ★ CQC&CGC Top Runner Advanced Technology Certification (4A class)
- ★ ISO 9001: 2015 Quality Management System
- ★ ISO 14001: 2015 Environment Management System
- ★ OHSAS 18001: 2007 Occupation Health Safety Management System
- ★ TUV NORD and UK NQA Quality System Certification



Insured by PICC and LLOYD'S

PICC
LLOYD'S

30 Years Performance Warranty



Jiangsu Sunport Power Corp., Ltd.

Manufactured in China



No.20, Xishi Road, Xinwu District, Wuxi



+86-25-52752690



www.sunportpower.com

SPP270–315P60



Electrical Characteristics at Standard Test Conditions(STC)

Spec/Model	Unit	SPP270P60	SPP275P60	SPP280P60	SPP285P60	SPP290P60	SPP295P60	SPP300P60	SPP305P60	SPP310P60	SPP315P60
Max–Power (P _m)	W	270	275	280	285	290	295	300	305	310	315
Power Tolerance	W	0~+3%									
Max–Power Voltage (V _m)	V	30.4	30.6	30.8	31.0	31.2	31.4	31.6	31.8	32.0	32.2
Max–Power Current (I _m)	A	8.89	8.99	9.10	9.20	9.30	9.40	9.50	9.60	9.69	9.79
Open–Circuit Voltage (V _{oc})	V	37.8	38.0	38.2	38.4	38.6	38.8	39.0	39.2	39.4	39.6
Short–Circuit Current (I _{sc})	A	9.50	9.58	9.66	9.74	9.82	9.90	9.98	10.06	10.14	10.22
Module Efficiency (η _m)	%	16.6	16.9	17.2	17.5	17.8	18.1	18.4	18.7	19.1	19.4

STC:AM=1.5, Irradiation1000W/m², Module Temperature25℃

Electrical Characteristics at Nominal Module Operating Temperature (NMOT)

Spec/Model	Unit	SPP270P60	SPP275P60	SPP280P60	SPP285P60	SPP290P60	SPP295P60	SPP300P60	SPP305P60	SPP310P60	SPP315P60
Max–Power (P _m)	W	200	204	208	212	216	220	224	228	232	236
Max–Power Voltage (V _m)	V	27.7	27.9	28.1	28.3	28.5	28.7	28.9	29.1	29.3	29.5
Max–Power Current (I _m)	A	7.23	7.32	7.41	7.50	7.58	7.67	7.76	7.84	7.93	8.01
Open–Circuit Voltage (V _{oc})	V	35.2	35.3	35.4	35.5	35.6	35.7	35.8	35.9	36.0	36.1
Short–Circuit Current (I _{sc})	A	7.67	7.75	7.83	7.91	7.99	8.07	8.15	8.23	8.31	8.39

NMOT: Irradiation800W/m², Ambient Temperature20℃,Wind Speed1m/s

Temperature Coefficient

Nominal Module Operating Temperature	43±2℃
Temperature Coefficient of P _m	-0.36%/℃
Temperature Coefficient of V _{oc}	-0.28%/℃
Temperature Coefficient of I _{sc}	0.06%/℃

Operating Conditions

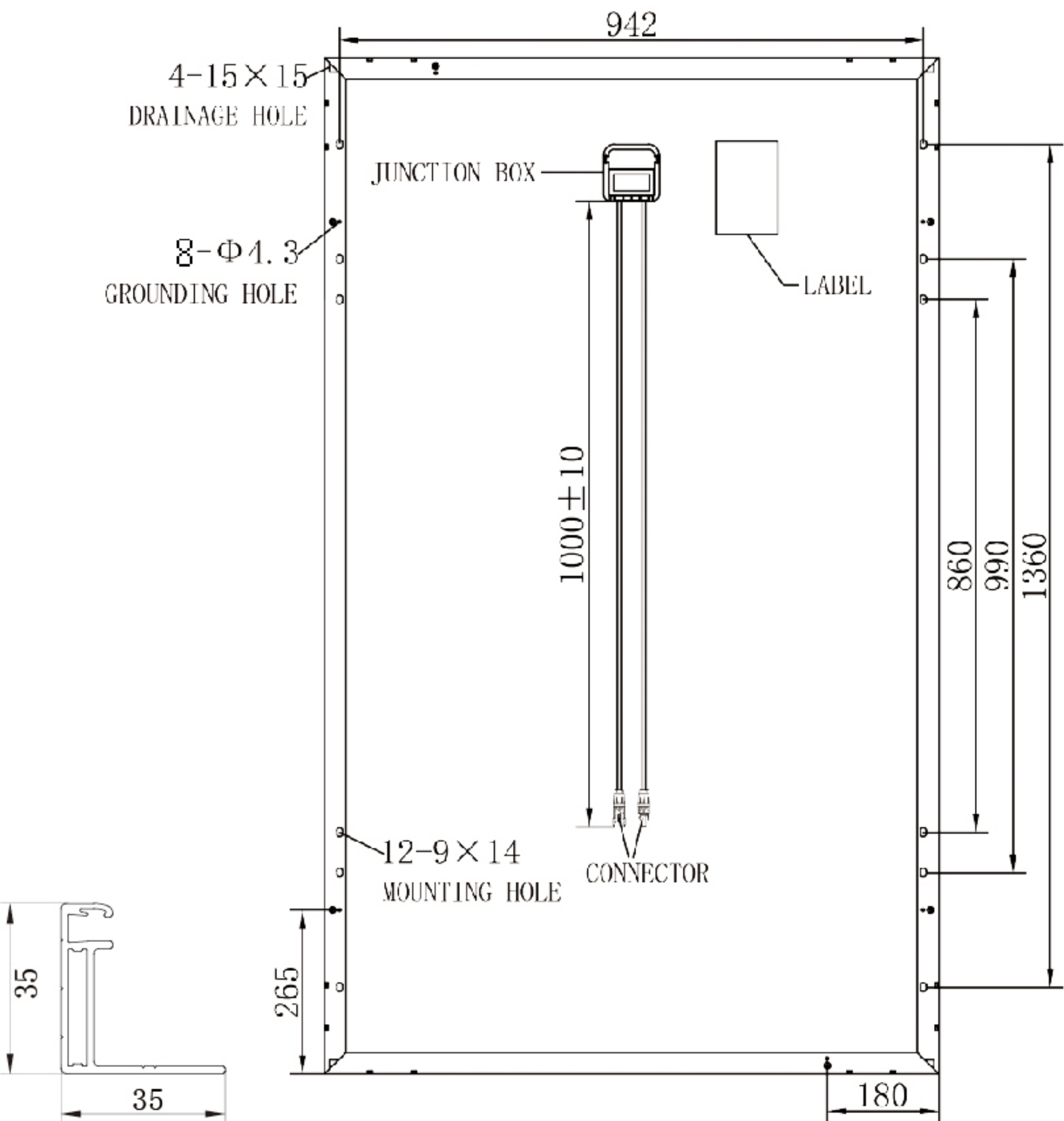
Max System Voltage	DC1000V(TUV)
Max Fuse Rated Current	15A
Operating Temperature Range	-40℃ ~ +85℃
Mechanical Load	5400Pa/2400Pa
Max Allowable Hail Load	φ 25mm hail, from 1m of distance at 23 m/s
Application Class	Class A

Mechanical Property

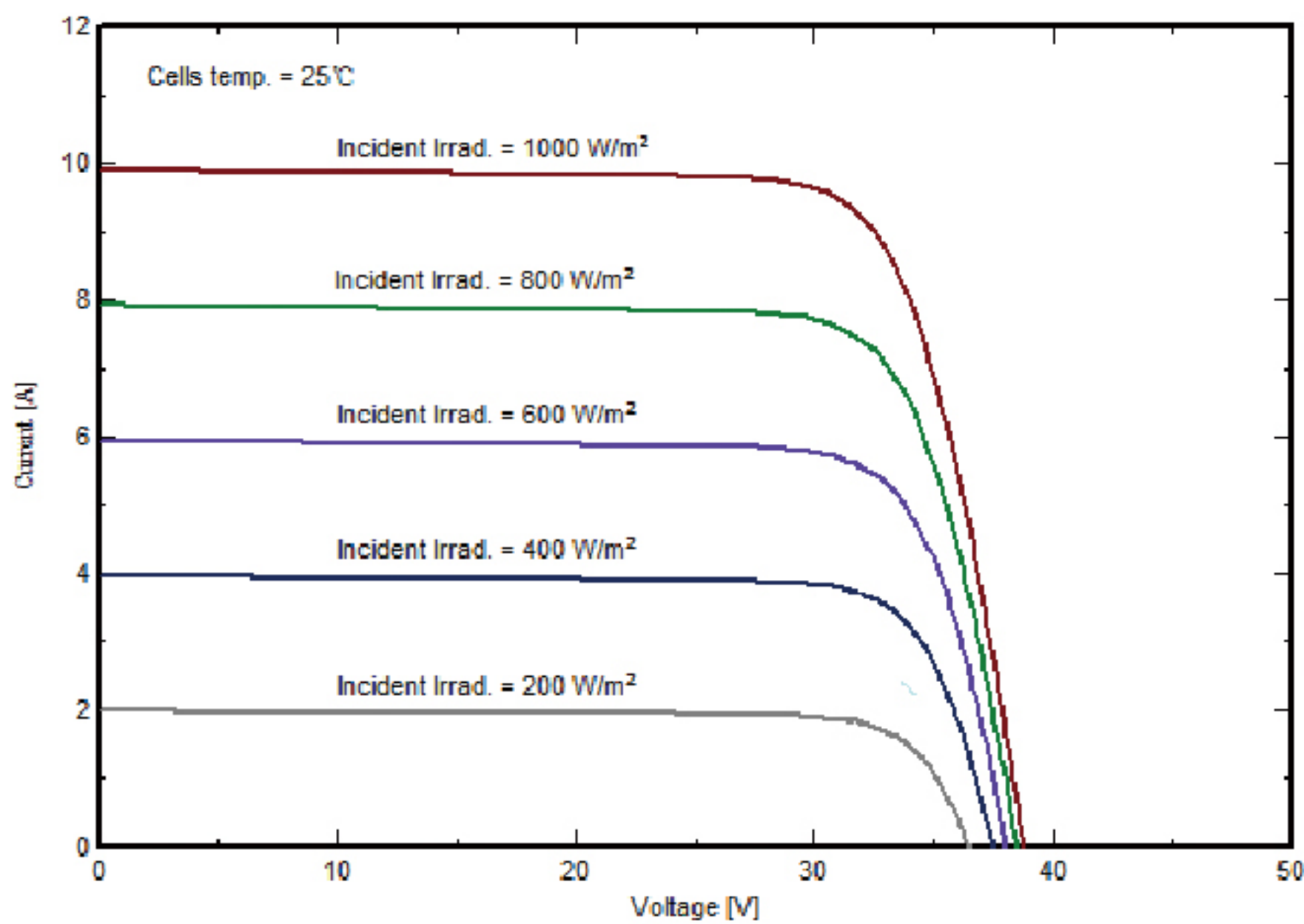
Dimension(L × W × H)	1640mmx992mmx35mm
Weight	18.5kg
Front Glass	High Transmittance Anti-reflective Coated Tempered Glass /3.2mm
Solar Cell	60(10x6)/6 inches
Encapsulant	EVA
Frame	Anodized Aluminum Alloy / Silver /Clear
Junction Box	IP67
Cable	1000mm / 4mm²
Connector	TL-CABLE01

Package

Container Size	Quantity(pcs)	Quantity(pallet)
20' GP	360	12
40' GP	840	28
40' HC	840	28



I–V Curve at Different Irradiation (SPP295P60)



I–V Curve at Different Temperature (SPP295P60)

