



A continuous commercial advantage from Apricus

Apricus Commercial Combi Pack

OUTLET

apricus.com.au/commercial



Need a continuous flow system that can handle heavy ongoing demand combined with storage?



Using the latest water heating technology, Apricus has designed a robust, highly efficient system to meet this demand – the Apricus Commercial Combi Pack.

The continuous flow packs are fully engineered and factory assembled, gas water heating systems that are designed to make installing commercial gas water heaters easy.

The system has been created to suit large residential and commercial properties including apartments, hotels, aged care residences, dairies, food processing facilities, sports amenities, hotels, commercial kitchens and hospitals.

We customise the number of heaters depending on the hot water demand. We work in partnership with you to develop the ideal solution for your project.

7 reasons to choose the Apricus Commercial Combi Pack

High flow rates to meet heavy demand

10 year tank warranty

Digital display, solar compatible controller

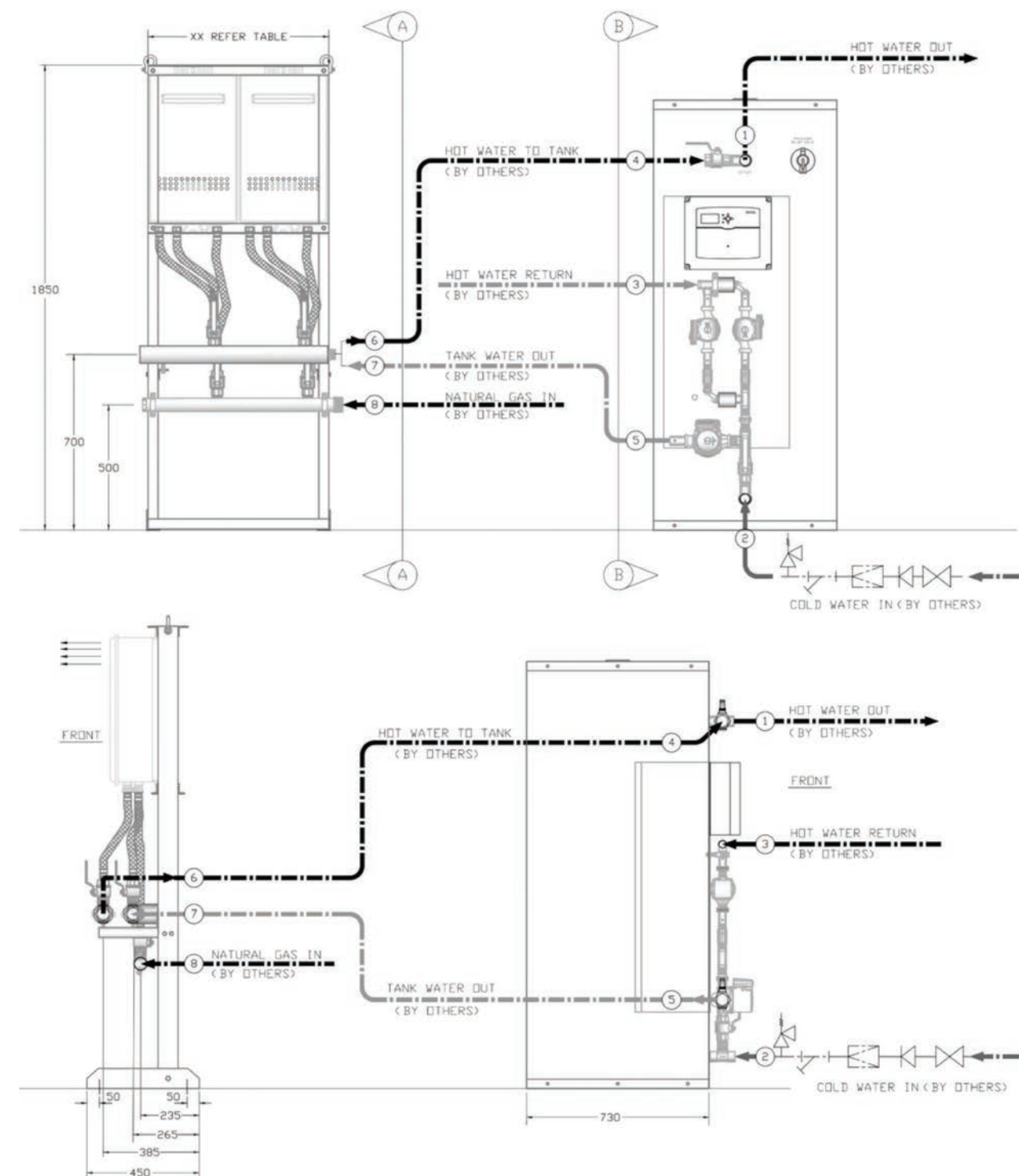
Option to manifold secondary pumps

6 star water heaters ensuring minimal gas consumption

Support to commission your project,
no matter the scale required

Highly competitive pricing

General arrangement



Specifications

Model No.	AP-CB1	AP-CB2	AP-CB3	AP-CB4	AP-CB5	AP-CB6
Gas Input (MJ/hr) Megajoules per Hour	200	400	600	800	1000	1200
Min. Gas Supply	1.13 (NG) - 2.75 (LPG) Pressure (KPa)					
1st 1/3rd Hour Capacity	656L	912L	1168L	1424L	1680L	1936L
1st Hour Capacity	1168L	1936L	2704L	3472L	4240L	5008L
100% Recovery – Time	30M	15M	10M	7.5M	6.0M	5.0M
Continuous Rating 50oC Rise	12.8L/PM	25.6L/PM	38.4L/PM	51.2L/PM	64.0L/PM	76.8L/PM
Storage Tank AP-400GLC	Height 1721mm	Diameter 731mm	Capacity 400L	Dry Weight 150kg	Max Supply Pres 550KPa	Min Supply Pres 200KPa
1 - Hot Water Out	40mm - BSPF					
2 - Cold Water In	40mm - BSPF					
3 - Return	20-25mm - BSPF	25mm - BSPF				32mm - BSPF
4 - Hot Water In	N/A	40mm - BSP Brass Ball Valve				
5 - Cold Water Out	N/A	25mm/32mm - BSP Brass Ball Valve				
Electrical Supply	Connection Means - 10A Lead & Plug - 1.8M					
230VAC/50Hz < 7.5A	Notes: Refer individual AP-CP Specifications for Pump number and Full Load Current (FLC)					
Heat Pack - Width	N/A	800MM	1160MM	1520MM	1880MM	2240MM
Heat Pack - Weight	40kg	80kg	110kg	140kg	180kg	210kg
Electrical Supply	0.56	1.12A	1.68A	2.24A	2.8A	3.36A
230VAC/50Hz	Connection Means - 10A Lead & Plug - 1.2M					
6 - Hot Water Supply	N/A	40mm - BSPTM				
7 - Cold Water	N/A	40mm - BSPTM				
8 - Gas	¾ BSP/20mm	40mm - BSPTM				
Location	External Floor Mount					

	Gas		No Secondary Pump	Single Secondary Pump			Dual Secondary Pump		
	Type		Basic	20mm	25mm	32mm	20mm	25mm	32mm
Single CFHWU & 400L Tank	Natural	Code	AP-CB01E26N400-BA	AP-CB01E26N400-SP20	AP-CB01E26N400-SP25	AP-CB01E26N400-SP32	AP-CB01E26N400-DP20	AP-CB01E26N400-DP25	AP-CB01E26N400-DP32
	LPG	Code	AP-CB01E26L400-BA	AP-CB01E26L400-SP20	AP-CB01E26L400-SP25	AP-CB01E26L400-SP32	AP-CB01E26L400-DP20	AP-CB01E26L400-DP25	AP-CB01E26L400-DP32
Two CFHWU & 400L Tank	Natural	Code	AP-CB02E26N400-BA	AP-CB02E26N400-SP20	AP-CB02E26N400-SP25	AP-CB02E26N400-SP32	AP-CB02E26N400-DP20	AP-CB02E26N400-DP25	AP-CB02E26N400-DP32
	LPG	Code	AP-CB02E26L400-BA	AP-CB02E26L400-SP20	AP-CB02E26L400-SP25	AP-CB02E26L400-SP32	AP-CB02E26L400-DP20	AP-CB02E26L400-DP25	AP-CB02E26L400-DP32
Three CFHWU & 400L Tank	Natural	Code	AP-CB03E26N400-BA	AP-CB03E26N400-SP20	AP-CB03E26N400-SP25	AP-CB03E26N400-SP32	AP-CB03E26N400-DP20	AP-CB03E26N400-DP25	AP-CB03E26N400-DP32
	LPG	Code	AP-CB03E26L400-BA	AP-CB03E26L400-SP20	AP-CB03E26L400-SP25	AP-CB03E26L400-SP32	AP-CB03E26L400-DP20	AP-CB03E26L400-DP25	AP-CB03E26L400-DP32
Four CFHWU & 400L Tank	Natural	Code	AP-CB04E26N400-BA	AP-CB04E26N400-SP20	AP-CB04E26N400-SP25	AP-CB04E26N400-SP32	AP-CB04E26N400-DP20	AP-CB04E26N400-DP25	AP-CB04E26N400-DP32
	LPG	Code	AP-CB04E26L400-BA	AP-CB04E26L400-SP20	AP-CB04E26L400-SP25	AP-CB04E26L400-SP32	AP-CB04E26L400-DP20	AP-CB04E26L400-DP25	AP-CB04E26L400-DP32
Five CFHWU & 400L Tank	Natural	Code	AP-CB05E26N400-BA	AP-CB05E26N400-SP20	AP-CB05E26N400-SP25	AP-CB05E26N400-SP32	AP-CB05E26N400-DP20	AP-CB05E26N400-DP25	AP-CB05E26N400-DP32
	LPG	Code	AP-CB05E26L400-BA	AP-CB05E26L400-SP20	AP-CB05E26L400-SP25	AP-CB05E26L400-SP32	AP-CB05E26L400-DP20	AP-CB05E26L400-DP25	AP-CB05E26L400-DP32
Six CFHWU & 400L Tank	Natural	Code	AP-CB06E26N400-BA	AP-CB06E26N400-SP20	AP-CB06E26N400-SP25	AP-CB06E26N400-SP32	AP-CB06E26N400-DP20	AP-CB06E26N400-DP25	AP-CB06E26N400-DP32
	LPG	Code	AP-CB06E26L400-BA	AP-CB06E26L400-SP20	AP-CB06E26L400-SP25	AP-CB06E26L400-SP32	AP-CB06E26L400-DP20	AP-CB06E26L400-DP25	AP-CB06E26L400-DP32

Product Key Code:

AP – Apricus
CB – Combi
0# – No of heaters
E – External / Internal

26 – Heater Size
N/L – NG or LP
400 – Tank Size

BA/SP/DP – Basic (no secondary pump)
Single Pump (single secondary pump)
Dual Pump (dual secondary pumps)
20/25/32 – Size of secondary pump

*32L Heaters & Internal Packs including flues also available



Contact us today

No matter the property size or requirements, contact Apricus today to develop the ideal solution for your project. apricus.com.au/commercial