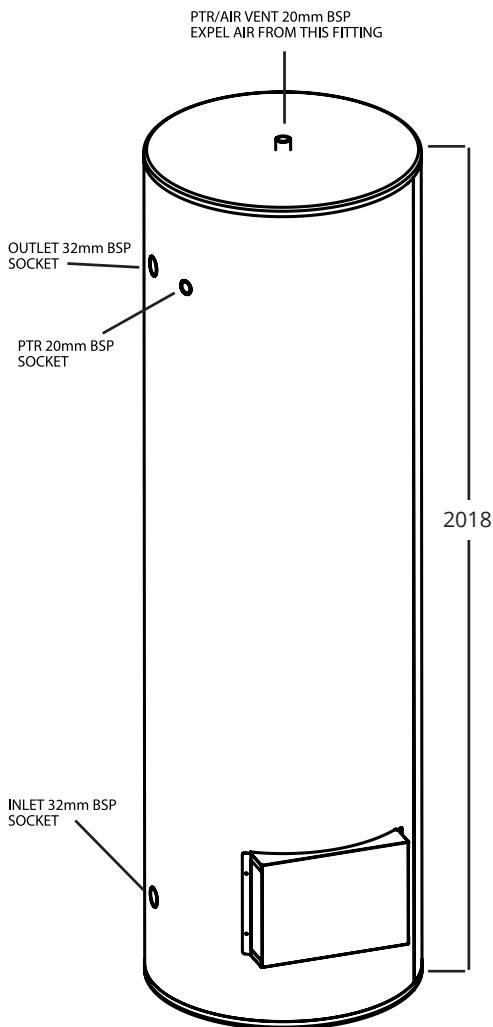
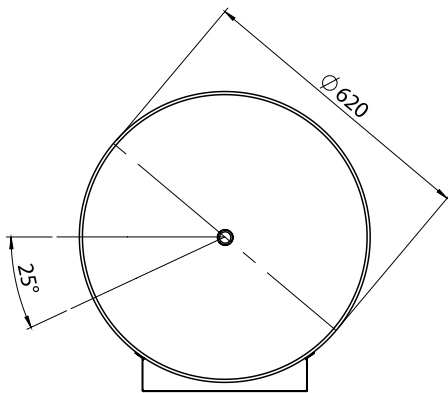




**COMMERCIAL**

# COMMERCIAL APRICUS TANK



This Australian manufactured, heavy duty stainless steel electric water heater is a versatile option for commercial hot water. It can be installed as a single unit, or in multiples to provide bulk hot water for your commercial heating requirements.

Electric water heaters are extremely reliable, and the Apricus triple element, 315L design boasts fast recovery rates and a 10 year commercial warranty offering you an affordable hot water solution with peace of mind.

Applications include caravan parks, accommodation blocks, restaurants or other industrial sites which require large volumes of hot water.

## FEATURES:

- Stainless Steel Tank
- 10 year warranty
- Thermostat range: 60° C - 80° C
- Manufactured in Australia

## TANK SPECIFICATIONS

<b>Tank Capacity</b>	315L
<b>Hot Water Delivery*</b>	495-558L in the first hour
<b>Max. Temperature</b>	80°c
<b>Relief Valve Setting</b>	850 kPa
<b>Maximum Supply Pressure</b>	750 kPa
<b>Element Power</b>	3 x 3.6kW or 4.8kW
<b>Tank</b>	442 Stainless Steel
<b>PTR Rating</b>	46kW
<b>Model Number</b>	AP315WS336



\*First hour hot water delivery rate based on a 50°C temperature rise.